

CRNCC

Canadian research network for
care in the community



RCRSC

Réseau canadien de recherche pour
les soins dans la communauté

Leading knowledge exchange on home and community care

Canada's Health Care System: Targets & Levers for Policy Change

*A. Paul Williams, Full Professor,
Department of Health Policy, Management & Evaluation
University of Toronto & CRNCC Co-Chair*

The Arthritis Society

April 3, 2009

*The CRNCC is supported by funding from the Social Sciences and Humanities Research Council of
Canada and Ryerson University.*

RYERSON UNIVERSITY



Social Sciences and Humanities
Research Council of Canada



Health Policy 101

- Skate to where the puck's headed



CRNCC

Canadian research network for
care in the community



RCRSC

Réseau canadien de recherche pour
les soins dans la communauté

Leading knowledge exchange on home and community care

Canadian Medicare

The CRNCC is supported by funding from the Social Sciences and Humanities Research Council of Canada and Ryerson University.


RYERSON UNIVERSITY



**Social Sciences and Humanities
Research Council of Canada**



Canadian Medicare: A Sacred Trust

- Medicare defining characteristic of Canadian identity
 - Top policy issue for Canadian public and governments
 - **Medicare supported on ethical and economic grounds**
 - Tommy Douglas, father of Medicare, voted “greatest Canadian” in 2005
- 

Medicare = Health Care Funding

- Public Financing/Private Delivery
 - 10 separate provincial health care insurance programs cost-shared with federal government under minimal conditions (Medicare principles)
 - Public payment for services provided by private fee-for-service physicians and not-for-profit hospitals

National Health Care Systems in Comparison

	Public Financing	Private Financing
Public Delivery	National Health Service (e.g., UK)	---
Private Delivery	Public Insurance (e.g., Canada)	Private Insurance (e.g., US)

Medicare Principles

- *Universality*: The plan must entitle 100% of the insured population (i.e. eligible residents) to insured health services on uniform terms and conditions
- *Public administration*: The health insurance plan of a province must be administered and operated on a non-profit basis by a public authority accountable to the provincial government

Medicare Principles

- *Accessibility:* The plan must provide, on uniform terms and conditions, reasonable access to insured hospital and physician services without barriers
- *Portability:* Residents are entitled to coverage when they move to another province within Canada or when they travel within Canada or abroad

Medicare Principles

- *Comprehensiveness*: The plan must insure all medically necessary services provided by hospitals and physicians



The Limits of Medicare

- Medicare *does require* coverage for ...
 - “Medically necessary” hospital and doctor services
- Medicare *does not require* coverage for ...
 - Even medically-necessary services provided outside of hospitals or by other providers (e.g., home and community care, pharmaceuticals, rehab)

CRNCC

Canadian research network for
care in the community



RCRSC

Réseau canadien de recherche pour
les soins dans la communauté

Leading knowledge exchange on home and community care

International Trends

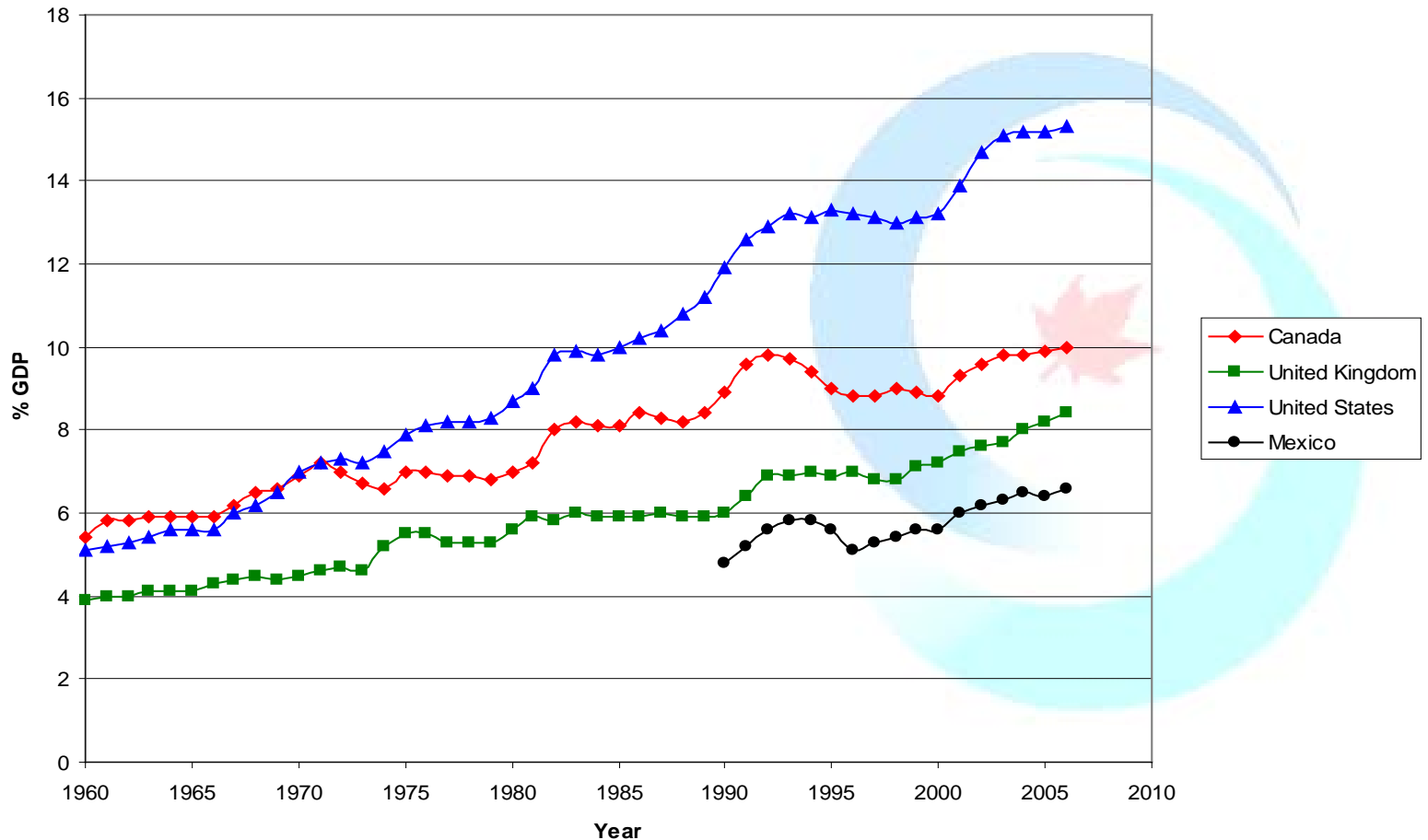
The CRNCC is supported by funding from the Social Sciences and Humanities Research Council of Canada and Ryerson University.



**Social Sciences and Humanities
Research Council of Canada**



Health Care Expenditures are Rising (% GDP)



Source: OECD Health Data 2008

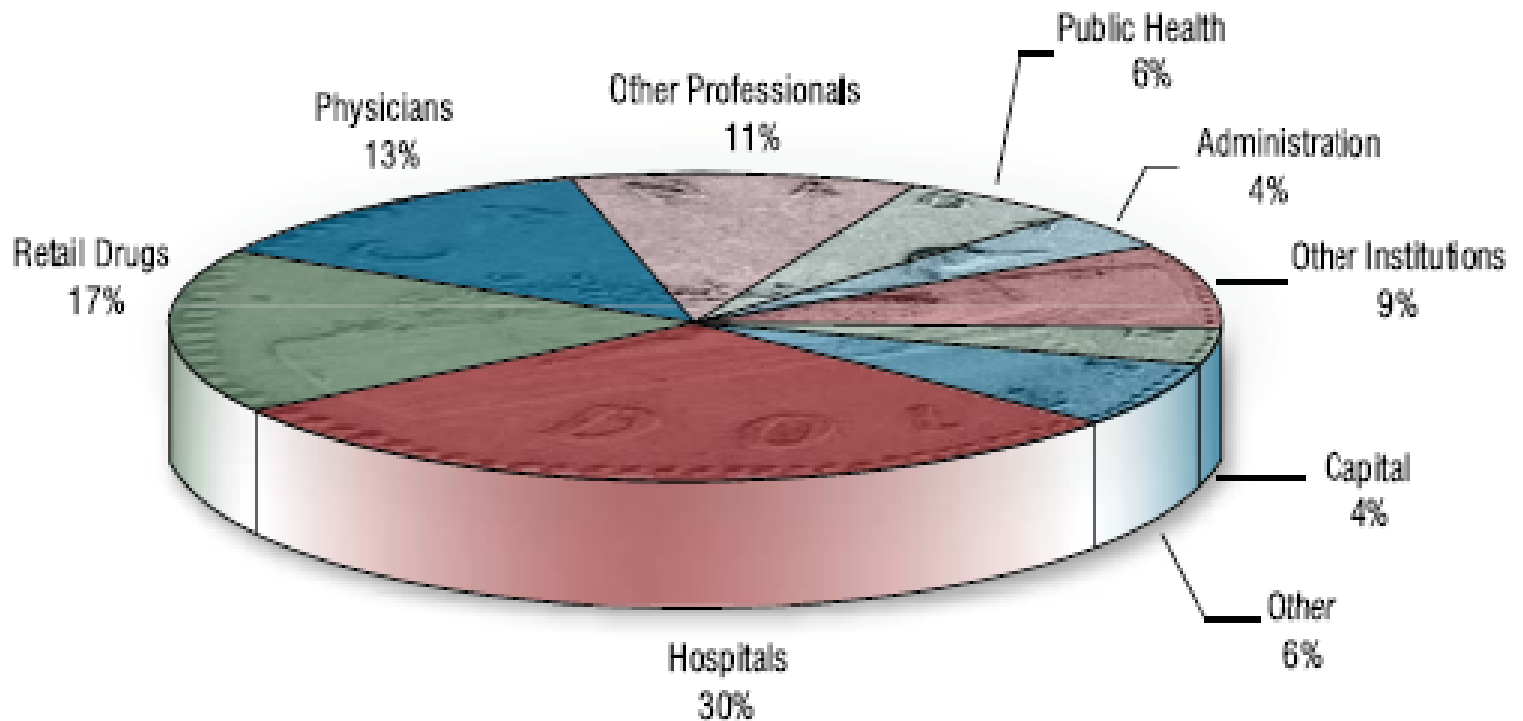
Key Cost Drivers

(OECD, 2008)

- Aging populations
- Increasing public expectations
- New and more expensive medical technologies and treatments (esp. drugs)

Still a Curative Focus *(2007)*

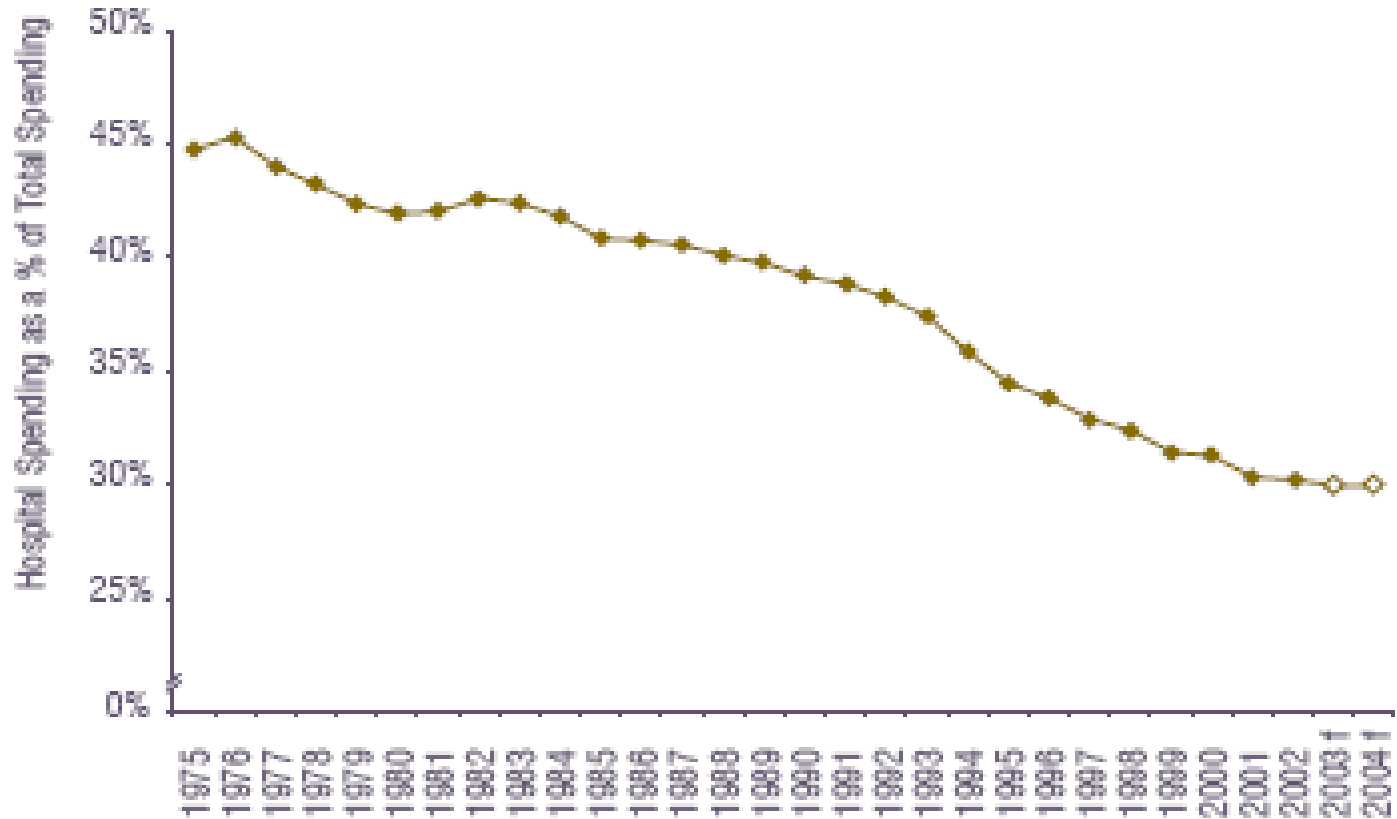
FIGURE 2 Distribution of Health Spending



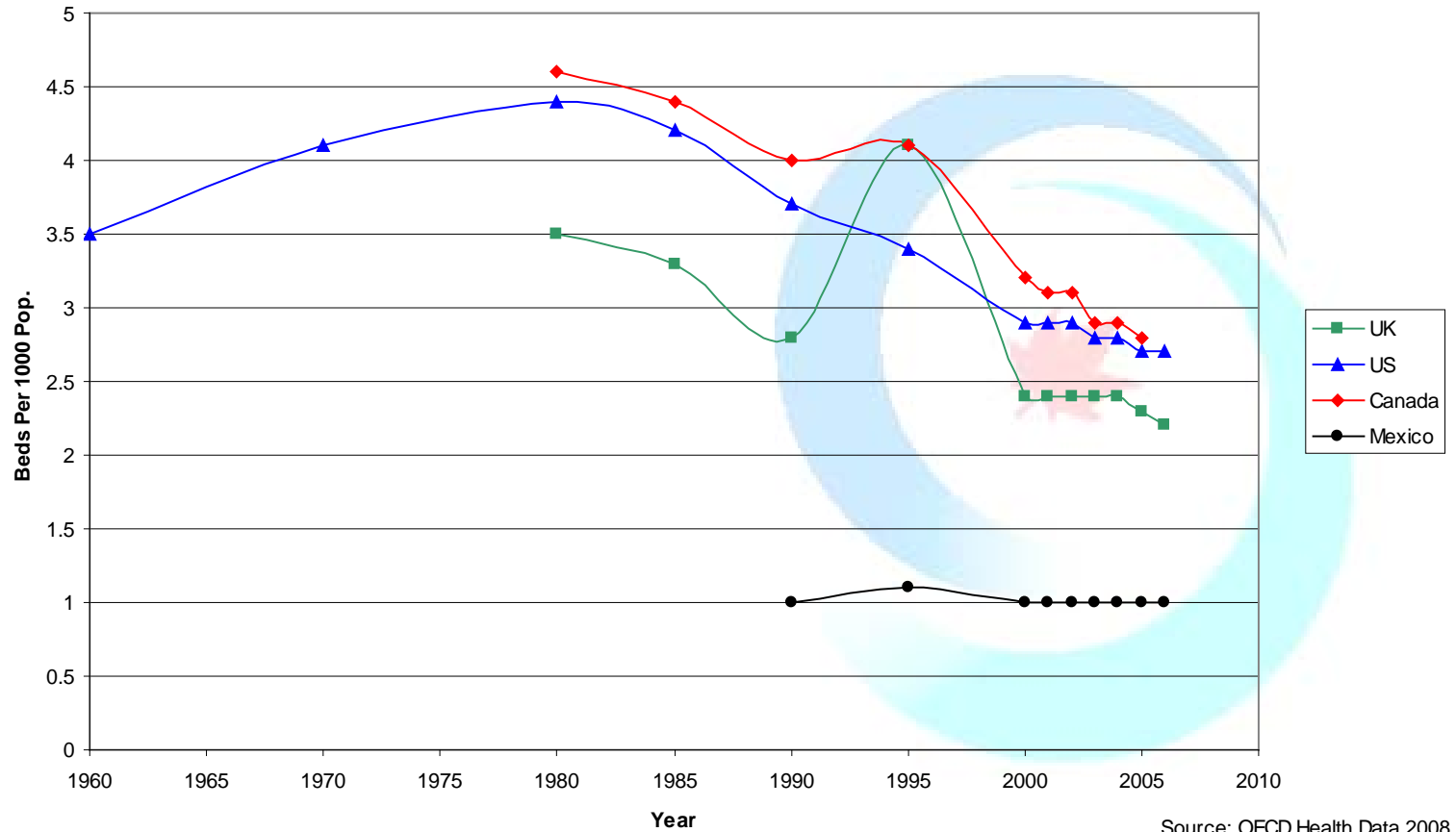
But ... Spending Patterns Are Changing

- Hospitals still account for largest, but declining, share of health dollars
 - In 2005 record \$42.4 billion
 - However, hospital % declined from 44.7% (1975) to 29.9% (2007)
- Key factors:
 - More out-patient and community care
 - More rapid rises in other sectors (e.g. pharmaceuticals)

Hospital Spending As Percentage of Total Health Care Spending (CIHI, 2005)

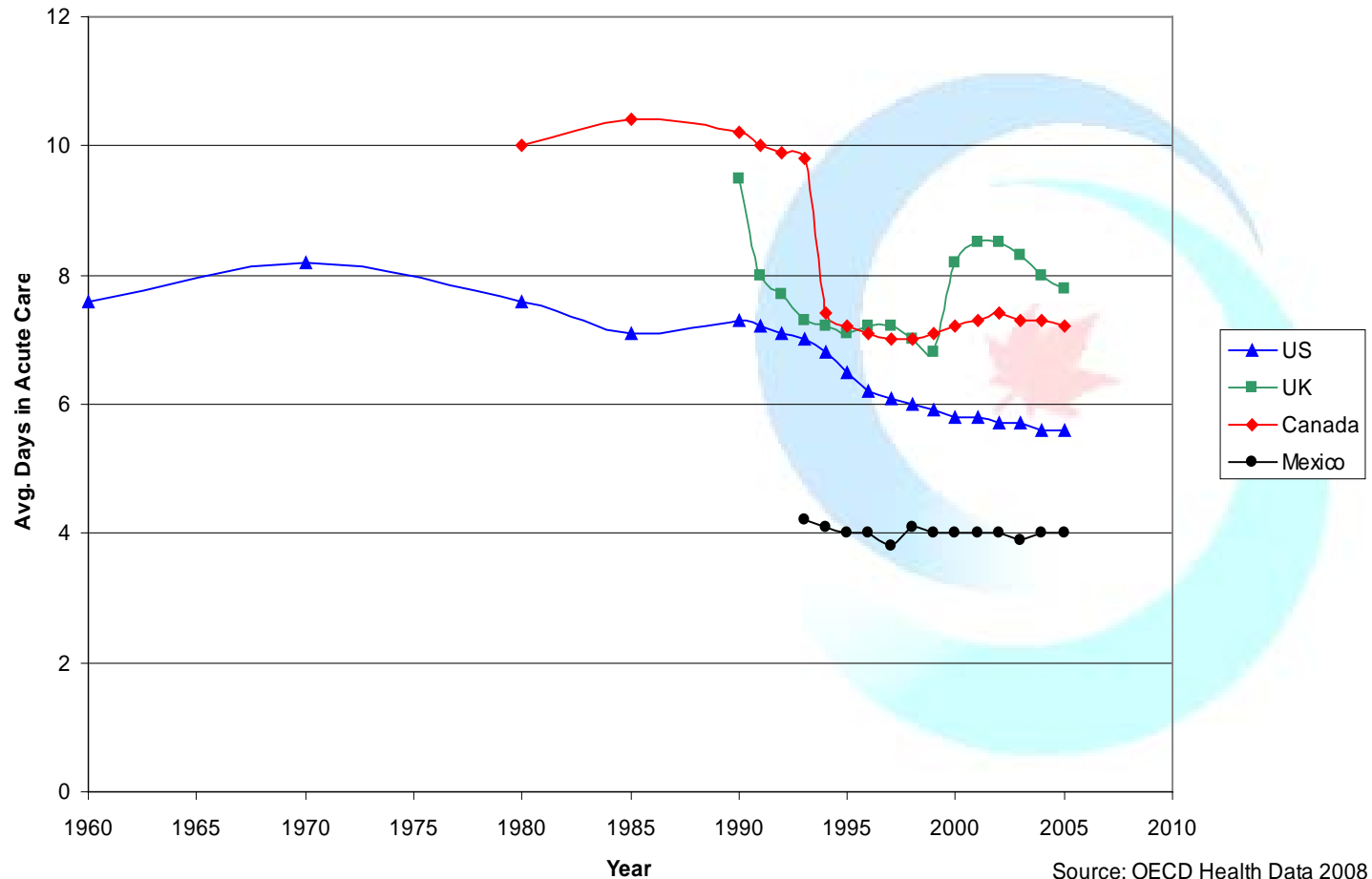


Acute Care Beds, Per 1000 Population (1960-2006)



Source: OECD Health Data 2008

Average Length of Stay in Acute Care, Days (1960-2005)



Source: OECD Health Data 2008

CRNCC

Canadian research network for
care in the community



RCRSC

Réseau canadien de recherche pour
les soins dans la communauté

Leading knowledge exchange on home and community care

Toward System Integration: Ontario's Local Health Integration Networks (LHINs)

The CRNCC is supported by funding from the Social Sciences and Humanities Research Council of Canada and Ryerson University.

RYERSON UNIVERSITY



**Social Sciences and Humanities
Research Council of Canada**



Ontario's Health Care System, 1990s

- **Fragmented/siloed**
 - Hospitals, home care, community supports, doctors, drugs, residential long-term care
 - Each with different legislation, funding, regulations, eligibility



Ontario's Health Care System, 1990s

- Costs of fragmentation
 - Difficult for vulnerable individuals (including growing number of older persons) to access most appropriate care
 - Incentives for providers to “cost-shift” through earlier discharges, unnecessary referrals, tighter eligibility requirements, service restrictions
 - Incentives for funders to control costs through capped budgets, de-listing insured services, unwillingness to cover new procedures

Mandate

- 14 LHINS responsible for planning, funding and monitoring care within geographic regions
 - LHIN budgets set by province
- Unlike regional health authorities in other provinces
 - No direct care provision
 - Hospitals (and other providers) maintain independent governance structures

Improving System Performance

- Reduce inappropriate hospital ED use
 - Ambulance crews now trained to assess whether a hospital admission is needed
 - Geriatric Emergency Management (GEM) nurses in hospitals redirect non-medical admissions to community care

- Reduce hospital ALC bed rates
 - Link to LTC and home and community care to facilitate timely discharge

Improving System Performance

- Reduce hospital use for Ambulatory Sensitive Conditions
 - Asthma, Angina, Congestive Heart Failure, Hypertension, Epilepsy, Diabetes, Chronic Obstructive Pulmonary Disease
 - Shorten LTC wait lists
 - Provide integrated home and community care
- 

Ontario's Aging at Home Strategy

- Four year, \$1.1 billion program introduced in 2007
 - “to enable people to continue leading healthy and independent lives in their own homes.”
 - Reverses policy of capping H&CC while building residential long-term care (LTC) beds (e.g. nursing homes)

Ontario's Aging at Home Strategy

- Includes ...
 - Professional home care services (e.g. nursing)
 - Community supports such as meals, transportation, shopping, friendly visiting, snow shoveling, adult day programs, caregiver support

Balance of Care

- Analyzed LTC wait lists in 9 LHINs
- Using very conservative assumptions, estimated 25%-50% of those on LTC wait lists could be supported safely, cost-effectively at home
- “Lower level” supports key
 - E.g., transportation, nutrition, medications management, housekeeping, social engagement, caregiver support

Balance of Care

- Little evidence for fragmented services
- Targeted, managed home & community care within an integrated continuum consistently meet individual & system goals
 - Maintain the health, well-being and autonomy of individuals and caregivers
 - Contribute to system sustainability

CRNCC

Canadian research network for
care in the community



RCRSC

Réseau canadien de recherche pour
les soins dans la communauté

Leading knowledge exchange on home and community care

Observations

The CRNCC is supported by funding from the Social Sciences and Humanities Research Council of Canada and Ryerson University.




**Social Sciences and Humanities
Research Council of Canada**



Medicare's Second Stage

- First stage of Medicare
 - Funding universal access to hospital and doctor care without regard to economic means
- Second stage of Medicare
 - Provide an integrated continuum of health and social services so that people get the care they need, when they need it, in a cost-effective way which contributes to system sustainability

Making the Case

- Much of the action now shifted to regional (LHIN) level
 - Medicare fundamentals remain:
 - Top line: individuals and caregivers
 - Bottom line: cost-effectiveness & system sustainability
- 

CRNCC

Canadian research network for
care in the community



RCRSC

Réseau canadien de recherche pour
les soins dans la communauté

Leading knowledge exchange on home and community care

www.crncc.ca

Please join us -- membership is free

The CRNCC is supported by funding from the Social Sciences and Humanities Research Council of Canada and Ryerson University.

RYERSON UNIVERSITY



**Social Sciences and Humanities
Research Council of Canada**

